

The background of the entire page is a photograph of a modern swimming pool and spa area. The pool is filled with clear blue water, reflecting the sky and the surrounding greenery. A large glass wall in the background shows a lush garden with various trees and plants. A metal handrail is visible on the left side of the pool deck. The right side of the image is partially covered by a dark blue diagonal overlay, which serves as a background for the text.

Air handling solutions for Swimming pools & Spa

Maximum flexibility – Tailor-made ventilation systems

Your strong partner in ventilation systems for swimming pools and spas

Swimming pools and spa areas demand advanced ventilation solutions. Guests expect comfort without humidity, while operators focus on building protection, energy efficiency, and durability—often within limited space. Fresh air must be delivered hygienically and quietly, requiring careful planning to balance these needs economically.

The evaporation rate of pool water depends on several factors, including water and air temperature, guest activity levels, and water movement caused by technical features such as waves or bubbling systems. Without active dehumidification, indoor air quickly becomes humid and tropical, leading to poor air quality. At low outdoor temperatures, moisture condenses on the coldest parts of the building envelope—first visible as fogged windows, later as hidden damage on ceilings

and walls. This condensation promotes mold growth and long-term structural damage. Additionally, evaporating pool water can be corrosive, especially when treated with brine or disinfectants, posing a direct risk to HVAC components. Swimmer activity and water attractions further increase evaporation rates, requiring precise system control. During off-hours, evaporation drops significantly, making demand-driven ventilation essential for efficiency.



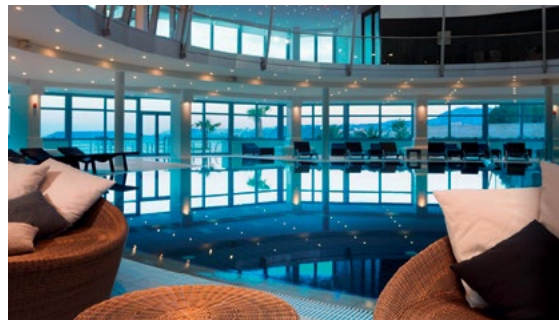
WOLF Ventilation: Customized for Your Requirements

WOLF pool ventilation units combine hygienic comfort, sustainability, and energy efficiency with compliance and cost-effectiveness. Designed for flexibility, they adapt to unusual room geometries and specific customer requirements, and can be installed indoors or outdoors. Most configurations are based on proven standard sizes, but fully customized solutions are also possible.

Our goal: ensure guest comfort in any weather—without compromising efficiency or budget

Key Features at a Glance:

- High-efficiency heat recovery
- Excellent thermal insulation of the casing
- Continuously adjustable EC fan technology
- Intelligent, demand-driven control
- Comprehensive corrosion protection (stainless steel, powder-coated or plastic-coated surfaces)
- Smooth, easy-to-clean surfaces
- Integrated heat pump as a ready-to-use component
- Optional pool water condenser (with heat pump)
- Interfaces for building management systems (MODBUS, BACnet, BACnet/IP, LON, IC Cloud Access)
- Effective sound insulation
- Optional RAL color customization

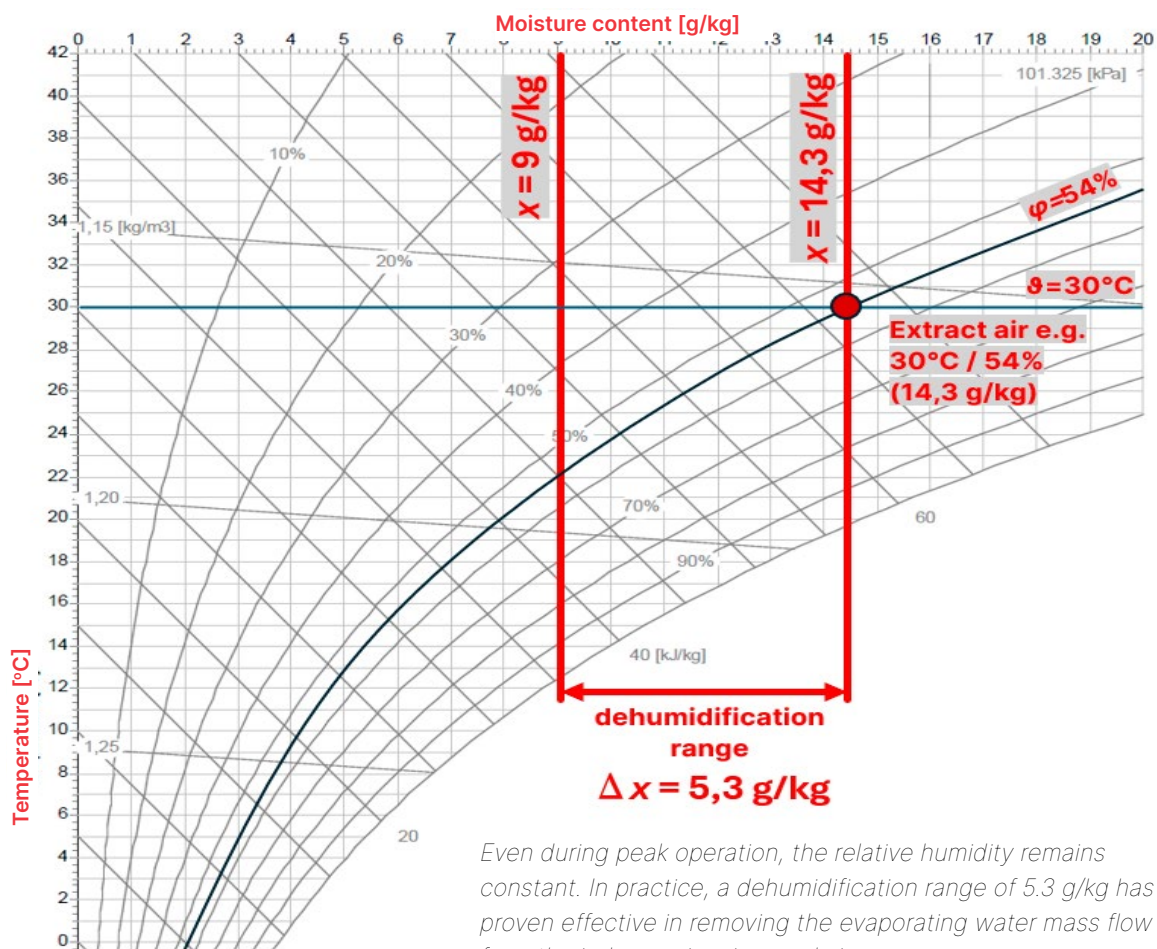


Reliable Performance for Every Pool Environment

Every project starts with a detailed analysis of requirements in line with VDI 2089 Sheet 1, ensuring alignment with the investor's goals. Our planning focuses on precise control of climate, humidity, and noise—tailored to your needs in any season, for any water composition, and in every installation scenario.

WOLF KG Flex pool units operate quietly and unobtrusively thanks to innovative fan technology and low airflow velocities, eliminating drafts. Smart sensors deliver hygienically clean, conditioned air exactly when needed, maintaining constant temperature and humidity even during peak loads or extreme frost. High-efficiency heat

recovery, minimal casing heat loss, and integrated heat pumps with optional pool water condensers ensure outstanding energy performance. Robust corrosion protection, easy cleaning access, and connectivity to building management systems via standard interfaces guarantee long service life and convenient remote control.

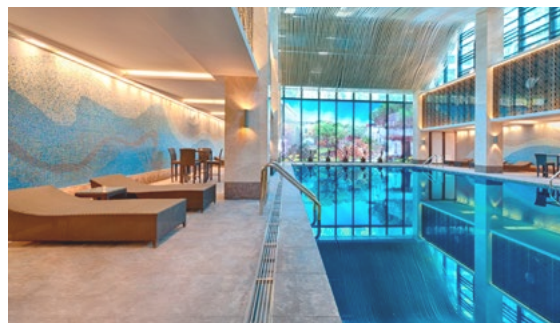
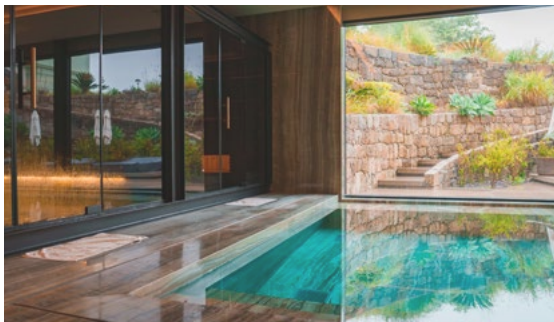


Plug-and-Play for Small Pools and Spa Areas

WOLF provides the ideal climate solution not only for large swimming pools but also for smaller private and hotel pools, therapy pools, and spa areas. For projects with a nominal air volume flow between 1,000 and 3,000 m³/h, compact pool ventilation units with a minimal footprint are available. These units deliver the same high standards of air quality, dehumidification, and energy efficiency as centrally installed KG Flex systems—just in a smaller, space-saving design.

WOLF CKL pool units combine free cooling with an integrated, inverter-controlled modulating heat pump to provide decentralized, highly efficient heating and cooling. A high-performance epoxy-coated aluminum plate heat exchanger ensures excellent heat recovery, significantly reducing operating costs while remaining highly recyclable. Intelligent measurement systems control IE5 EC fans for stepless, demand-based airflow, ensuring

optimal comfort and efficiency at all times. Thanks to pre-assembled piping and wiring, these units are truly plug-and-play, allowing for quick installation and commissioning without the need for a refrigeration license. This minimizes planning and preparation work, making CKL units the perfect choice for projects with tight schedules or limited on-site resources—delivering reliable performance, energy savings, and long-term durability.



An Investment That Pays Off

Creating the perfect indoor climate for pools and spa areas is about more than just comfort—it's about efficiency, sustainability, and long-term reliability. WOLF ventilation systems are designed to deliver all three, ensuring a healthy, pleasant atmosphere while reducing energy costs and environmental impact.

Reliable Dehumidification, Maximum Efficiency

In spa and pool areas, guests expect a pleasant, draft-free climate—whether for relaxation, sports, or fun. WOLF's energy-efficient and whisper-quiet ventilation systems deliver exactly that: a perfectly tempered and dehumidified atmosphere with a constant supply of fresh, filtered air. Both temperature and humidity can be controlled centrally or remotely, ensuring comfort tailored to visitor numbers and activities.

Sustainable Comfort for Tomorrow

Condensation is a thing of the past. WOLF HVAC pool technology with advanced heat recovery and state-of-the-art fan systems significantly reduces energy consumption, operating costs, and the CO₂ footprint. Intelligent, demand-driven control adapts ventilation seamlessly—from basic airflow outside operating hours to high volumes during peak activity. The right unit capacity ensures efficient partial-load operation, maximizing energy savings and long-term performance.



WOLF is one of the leading international suppliers of innovative solutions for indoor climate control. Here's what matters most to our customers:



German Know-how

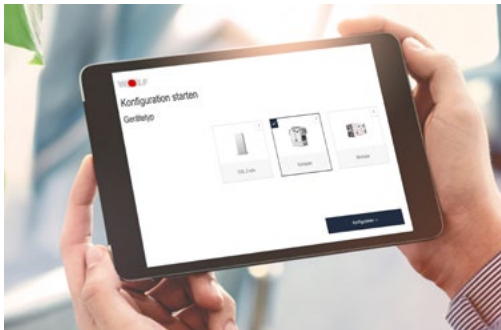
We develop our products at our headquarters in Mainburg, Bavaria - and manufacture them with the highest precision and vertical integration. WOLF Campus training programme offers you in-depth expert knowledge on professional installation, maintenance, etc. with seminars and in-house training courses.



Partnership at eye level

A nationwide and international network of personal contacts at our locations ensures fast and uncomplicated support. The WOLF Service Team provides you with expert advice and support during commissioning and maintenance.

A network of wholesale partners facilitates the procurement of spare parts.



Simply powerful solutions

WOLF ventilation systems combine efficiency, durability and ease of operation.

The wide-ranging air handling product portfolio is complemented by digital services that save time, money and CO₂.



For an intact environment and diversity

We consciously prioritise durability and sustainability in our design and choice of materials. At WOLF, different generations and nations work hand in hand and benefit from each other.

WOLF Air handling

A suitable solution for every demand



Hotel and accommodation



Professional Kitchen



Production and industrial buildings



Healthcare



Agriculture



Experience, culture and sports buildings



Office and administration buildings



Logistics and warehouses



Retail stores



Transportation and traffic



Educational institutions



Data centers

Get in touch for more details

Please find your local contact on:
www.wolf.eu/wolf-worldwide



Alshaimaa Abdelaziz
Expert in Pools and Spa